

# ZUKUNFT WORKS LTD.

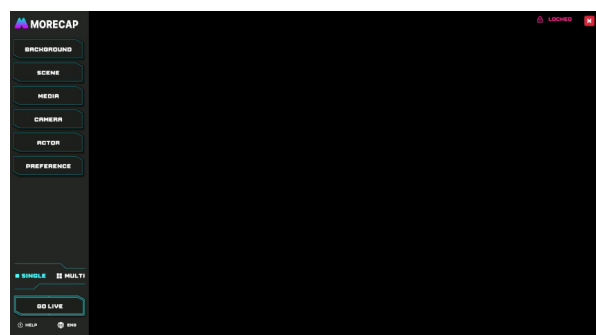


## Morecap<sup>®</sup> 3.0.9 Welcome Guide

### ► Welcome to Morecap

Morecap is an easy to use software for virtual character performance such as VTuberlive streaming.

- Real-time camera operation.
- Simultaneously syncing to various mocap devices.
- Face Cap (iOS app) supportability.
- VRM file format supportability.
- Importing your own video and image to the scene as background.



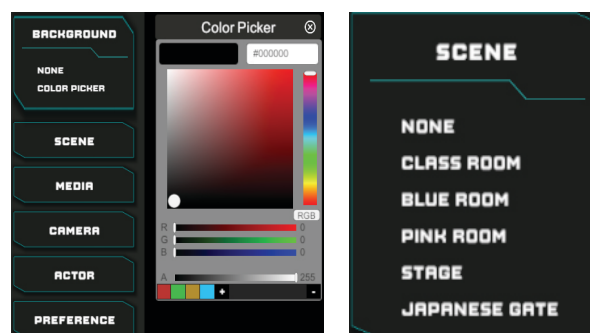
### ► Choose the Scene for Your Project

Background

- Pick the background color with **COLOR PICKER**.
- If you would like to use green or blue screen, please pick the color with **COLOR PICKER**.

Scene

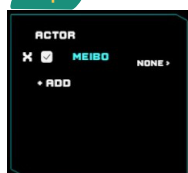
- Click **SCENE** button to extend the virtual scene list then press on the name of the scene to load it in.



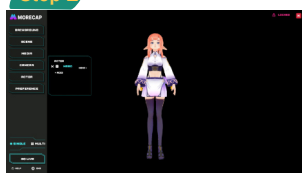
### ► Place the Avatar in the Scene

- Step 1 - Press the **ACTOR** button and click the **ADD** button to add the actor you preferred. You can also import your own actor with the **IMPORT VRM** button.
- Step 2 - After adding the actor, the actor's name will appear on the screen.
- If you want to delete an actor, click on its name then press **X** to delete.

Step 1



Step 2



### ► Switch Between LIVE Mode/Hotkey Mode

- By clicking "Space" on your keyboard, you can switch the mode between LIVE and Hotkey.
- If you want to control the character through Kapture, please switch to **LIVE MODE**. If you want to control the character through hotkey on your keyboard, please switch to **HOTKEY MODE**.

LIVE MODE

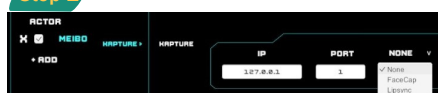
HOTKEY  
MODE

### ► Connect the Avatar to Kapture and Face Cap/Lipsync

- Step 1 - Press on **NONE** > **KAPTURE**. You should be able to see the character is syncing with your motion.
- Step 2 - If you would like to connect **FACE CAP/Lipsync** for face motion capture, please click on **KAPTURE**. Once the floating window pops up, type 9000 into the text field/choose the microphone below **FACE CAP/Lipsync**.
- Set the **IP** in the floating window if you want to connect with another computer and get 2 sets of Kapture working simultaneously. Please check and type in the IPv4 number of the other computer running Kapture. For single mode the local IP number is 127.0.0.1.
- If your character is not moving at all. Please check the **PORT** value in the same floating window. If the value is not 1, please change it back by typing 1 into the text field below **PORT**.

\*NOTE: Before connecting to Kapture, make sure everything works properly in its software.

Step 1

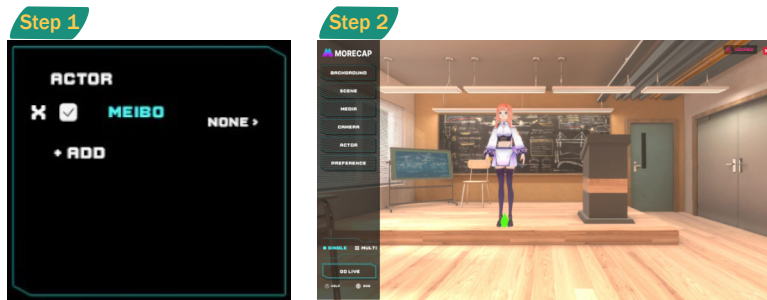


Step 2



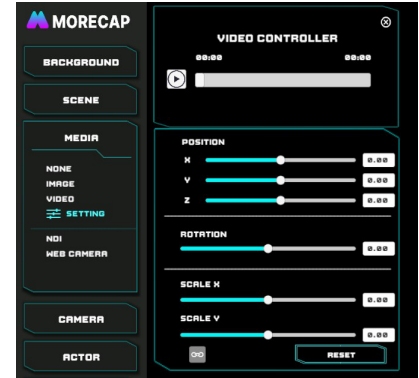
## ► Move the Avatar to a Preferable Position

- You can move your actor to anywhere you want in the scene.
- Step 1 - Select the actor by clicking its name.
- Step 2 - Click the left mouse button on the floor while pressing the T key on your keyboard. A **green waypoint** will show up on the spot you just clicked and the actor will be moved to the same position.



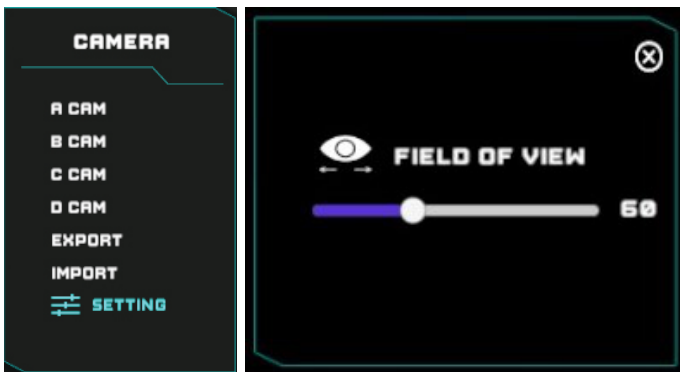
## ► Import Your Own Media

- Click the **IMAGE** button to import an image you like as the background.
- Click the **VIDEO** button to import a video you like as the background. Press the **SETTING** button and use the **VIDEO CONTROLLER** for video playback controls. Set the **POSITION**, **ROTATION**, **SCALE X** and **SCALE Y** of your image/video in the **ADVANCED SETTING** section.
- If you want to show the webcam screen, select the **WEB CAMERA** button.



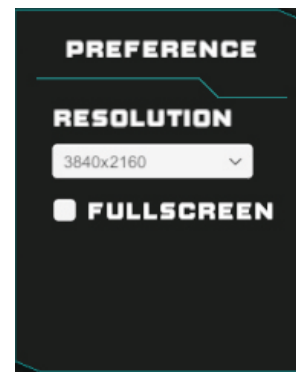
## ► Control the cameras with Multi-Camera System

- Morecap has a multi-camera system (**CAM A, B, C, D**) built-in for you to present the avatar in different camera angles..
- The position of the camera can be exported, and then be imported afterwards.
- Click **SETTING** to tweak the FOV and the moving speed of the current camera.



## ► Display Settings

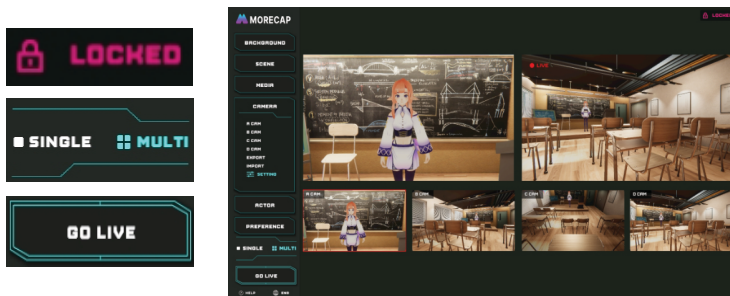
- Use the drop-down menu to select a proper resolution for Morecap.
- Click on the **FULLSCREEN** checkbox to switch Morecap to full screen mode.



## ► Switch Between Single and Multi-Camera Modes

- By clicking on the **MULTI** button, you can monitor 4 cameras at the same time with our virtual video mixer system, you can also switch cameras and adjust the view in real-time for live streaming.
- If you want to go live with a dual monitor setup, click on **GO LIVE** to send the **LIVE** view to the second monitor.
- Press **LOCKED/UNLOCK** to keep or break synchronization between current and **LIVE** camera views.

\*NOTE: The resolution of two monitors have to be identical for the GO LIVE mode to work correctly.



## ► Hot key

### Camera

- Roll mouse wheel up and down = FOV
- Click mouse wheel = Move
- right mouse = Rotate
- R = Reset Camera
- V = Director Mode
- L = Lock Live Screen
- Q = Up
- E = Down
- A = Left
- D = Right
- W = Forward
- S = Backward
- F1~F4 = Switch Camera
- F8 = Virtual Camera
- F11 = Full Screen
- F10 = Reset Floating Window

### Meibo Effect

- Alt+1~5 or Keypad / \* - + .

### Camera Effect

- Shift+1~7

### Character (Selected)

- T+ left mouse = Set Origin Point
- T = Hide Origin Point
- Alt+Q W E S A D = Move
- Alt+right mouse = Rotate
- Alt+mouse wheel = Move

### Character (Not Selected)

- 0~9 = Movement
- Space = LIVE/HOTKEY MODE
- Ctrl+0~9 or Keypad 0~9 = Facial Expression

